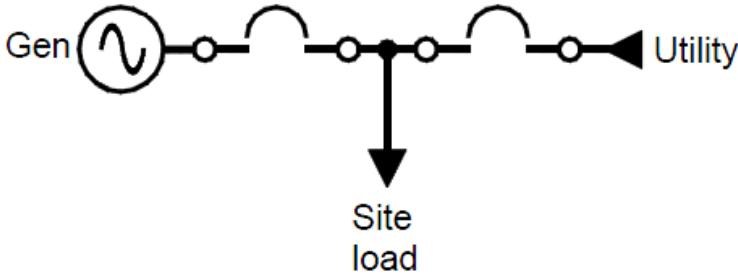


Power Module Switchgear

Low & Medium Voltage



Product Features

- Available in Low or Medium Voltage
- Fully Automatic Operation in Parallel with Utility or Other Generators
- Minimized Overall Dimensions for Power Module Space and Air Flow Requirements
- Integrated Engine Battery Charger
- Internal AC Distribution for Jacket Water Heaters, Space Heaters, Fuel Transfer Pumps, etc.
- Remote Control Ready
- Utility RTU Compatible
- "Next Generation" Integrated Microprocessor Based Control Provides Broader Range of Features and Reduced Cost
 - Automatic Paralleling
 - Automatic Voltage Matching
 - Full Complement of Protective Relaying and Power Metering Functions
 - Soft Loading kW and kVAR Control
 - LCD Display and User Keypad User Interface

Product Specifications

Voltage:	208 – 600V, 3 phase, 3 or 4 wire (low voltage) 2400 – 15kV, 3 phase, 3 wire (medium voltage)
Current:	Up to 4000A (low voltage) Up to 3000A (medium voltage)
Enclosure:	NEMA 1 for indoor use
Dimensions:	Std. low voltage – (28" or 56"W) x 80"H x (31" or 42"D)
Metering Accuracy:	0.3% - voltage and current 0.6% - power and energy
Metering Options:	3 varieties of APT true RMS, 3 element digital Power Sensors available: <ul style="list-style-type: none"> • PS-V – voltage and frequency sensing • PS-P – power sensing (A, kW, PF, kVAR, etc.) • PS-E – energy sensing (kWh, kVARh, kVAh) Optional analog metering
Generator Protection:	Overcurrent (50/51), under voltage (3 phase), over voltage (3 phase), under frequency, over frequency, reverse power, reverse kVARs, ground fault, loss of utility, utility overvoltage (3 phase), utility under voltage (3 phase), utility over/under frequency
Options:	SCADA-ready Modbus RTU communications port